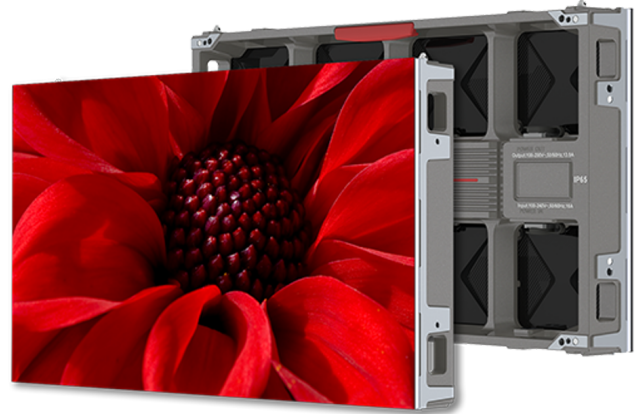




Planar Luminate Ultra W 2.0

Outdoor MicroLED Video Wall

Planar® Luminate™ Ultra W Series LUW 2.0 is an outdoor high-brightness MicroLED video wall display with a fine 2mm pixel pitch for up-close viewing even in direct sunlight. It has a convenient 16:9 aspect ratio, is IP65 rated for outdoor use and features front or rear service access, easily facilitating applications from transportation and retail signage to company picnics and poolside cinema. It is excellent for indoor spaces with high-ambient light as well.



SPECIFICATION	DETAIL
Model	LUW 2.0
Pixel Pitch (mm)	2.00
LED Drive Method	Constant current drive
Cabinet Size (W x H x D)	25.19" x 14.17" x 2.76" (640 x 360 x 70 mm)
Cabinet Diagonal	28.9" (734.06mm)
Cabinet Resolution	320x180
Pixel Density (/m2)	288,000
Modules/Cabinet (W x H)	4x1
Module Resolution	80x180
Module Size (W x H)	160 x 360 mm
Power Consumption, Maximum (watts)	210W/cabinet; 840W/m2
Line Voltage	100~240v AC, 50/60Hz
Cabinet Weight (per display)	≤ 17.64lbs
Brightness Max, Calibration On (cd/sq)	3000

Supported Frame rate	50&60
Color Temperature(K)	3000-10000 adjustable
Contrast	10000:1
Viewing Angle (50% of brightness)	>170° horizontal; >170° vertical
Front Access Install/Service	Yes
Refresh Rate	3840hz
LED Lifetime (Half Brightness)	100,000 hours
Operating Temperature/Humidity (degrees F/C, relative humidity)	-20° to 50° C -4° to 122° F (10-80% RH, non-condensing)
Storage Temperature/Humidity (degrees F/C, relative humidity)	-35° to 60° C -31° to 140° F (10-85% RH, non-condensing)
IP Rating	65 Front and back

For more information, please visit www.planar.com

Specifications are subject to change without notice.

Specification Report Date: 9/26/2024

© Copyright 2024 Planar Systems, Inc. All rights reserved