



Planar CarbonLight CLI Series

LED Video Wall Displays

- ▶ *1.5, 1.9, 2.6, 3.9 & 5.2mm pixel pitches*
- ▶ *Carbon fiber construction*
- ▶ *Front serviceable*
- ▶ *Hang, wall mount or free stand*



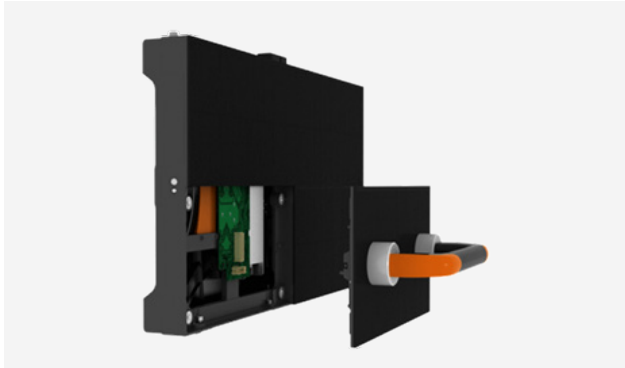
Planar[®] CarbonLight[™] CLI Series indoor LED video wall displays are lightweight and high strength, patented carbon fiber frames in 500 x 500 modular designs. They are versatile and can be hung, wall mounted or used in free-standing installations. Beveled edges enable 90-degree corners, making them ideal for a variety of fixed or temporary event applications.

Carbon Fiber Strength

Planar CarbonLight LED display solutions share a patented carbon fiber construction that makes them uniquely lightweight, thin and strong. Their refined mechanical construction and innovative features enable fast and versatile installations that support creativity and catch the eye.



Product Highlights



Easy Access

Planar CarbonLight CLI Series displays feature front-side installation, enabling easy wall mounting without much space needed behind the video wall. Front service shrinks the overall footprint making more spaces viable for LED video walls.

Combine with Curves

Displays can be seamlessly combined with bendable Planar® CarbonLight™ CLI Flex™ Series cabinets to form unique video walls with both flat and curved sections.

Specifications

Model	CLI1.5	CLI1.9	CLI2.6	CLI3.9	CLI5.2
Pixel Pitch (mm)	1.5	1.9	2.6	3.9	5.2
Resolution	320 x 320	256 x 256	192 x 192	128 x 128	96 x 96
Cabinet Size (WxHxD)	500 x 500 x 63mm 19.69 x 19.69 x 2.48		500 x 500 x 53mm 19.69 x 19.69 x 2.09		
Cabinet Weight	4.3kg 9.48lbs*				
Weight Bearing Capacity (per cabinet)	1,000kg** 2,204lb**				
Power Consumption, Max (watts)	150/Cabinet 600/m ² 56/ft ²	300/Cabinet 1,200/m ² 111/ft ²		150/Cabinet 600/m ² 56/ft ²	
Power Consumption, Typical (watts)	75/Cabinet 300/m ² 28/ft ²	150/Cabinet 600/m ² 56/sft ²		75/Cabinet 300/m ² 28/sft ²	
Line Voltage	100-240V AC, 50/60Hz				
Brightness Max	600 cd/m ²	800 cd/m ²		1000 cd/m ²	
Contrast Ratio	1,000:1		4,000:1		
LED Refresh Rate	3,840Hz				
Color Temperature, Calibrated	6,500k				
Viewing Angle Horizontal, Vertical	140°, 140°				
Frame Rate	30~70Hz				
Grey Scale	14 bit				
Service Access	Front				
Installation	Hanging, Standing, Wall Mounted				
Lifetime, Typical	75,000 hrs				
Environment	Indoor				
Protection Rating	IP40				
Operating Temp.	-20° to 40° C -4° to 104° F				
Storage Temp.	-20° to 50° C -4° to 122° F		-35° to 60° C -31° to 140° F		
Cabinet Material	Carbon Fiber				

* Display weight includes single PSU
 ** Weight Bearing Capacity for hanging

For more information, click to visit: www.planar.com/carbonlight-cli

Planar is a trademark of Planar Systems, Inc. All other trademarks and service marks are property of their holders. Copyright © 2023 Planar Systems, Inc. All rights reserved. This document may not be copied in any form without permission from Planar. Information in this document is subject to change without notice. 11/2023