

# PT1510MX QUICK START GUIDE

## PT1510MX

Thank you for choosing Planar's 15" PT1510MX resistive touchscreen monitor.

### Customer Service:

To view online documentation and frequently asked questions, or to send an email to our technical support staff, please visit: <http://www.planar.com/support> or call 1-866-PLANAR1 (1-866-752-6271).

To receive advanced notification of product updates, please register your monitor at [www.planar.com/support](http://www.planar.com/support).

Planar is one of the world's most accomplished providers of flat-panel displays, with over 20 years' expertise in flat-panel innovation. The company provides the most dependable display solutions for various applications in industrial, medical, and commercial markets. Each PT touch LCD monitor comes standard with our 3-Year Customer First™ Warranty featuring FREE 2-Day Advance Replacement.

## 1 Monitor Set-up

1. If it is necessary, clean the front surface of the display by using clean, compressed air or by using only a clean, dry, soft cloth.
2. Connect the video and power cables.
3. Read the Touch Set-up section prior to powering up the computer.

### Touchscreen Set-up -

Please note: The PT1510MX comes with both RS-232 and USB connections. If you're using the RS-232 connection follow the instructions below:

1. Be sure that the RS-232 cable is disconnected from the computer.
2. Power on the computer
3. Load the Touch Screen Driver CD
4. Follow the step-by-step instructions for the PT1510MX as found in the Touch Screen Driver Installation Manual located on the CD.
5. Reconnect the RS-232 cable between the computer and monitor prior to use.

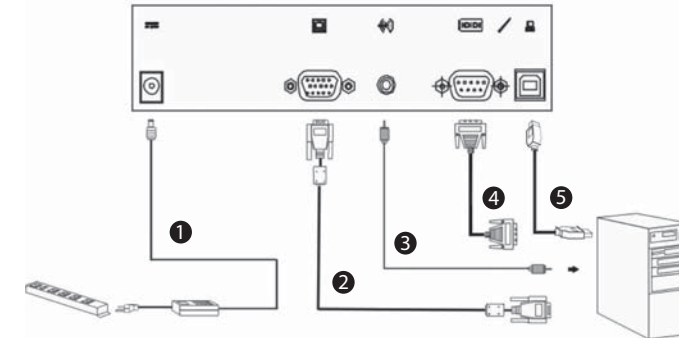
If you're using the USB connection follow the instructions below:

1. Be sure that the USB cable is not connected to the PC.
2. Load the CD-Rom.
3. Follow the step-by-step instructions for the PT1510MX as found in the Touch Screen Driver Installation Manual located on the CD.
4. Reconnect the USB cable between the computer and monitor prior to use.
5. If the touch screen isn't active, simply reboot your system.

**PLEASE NOTE!** Don't plug in both the RS-232 and USB cables! Doing so may cause a driver conflict, making your touch screen inoperable.

## 2 Set-up Diagram

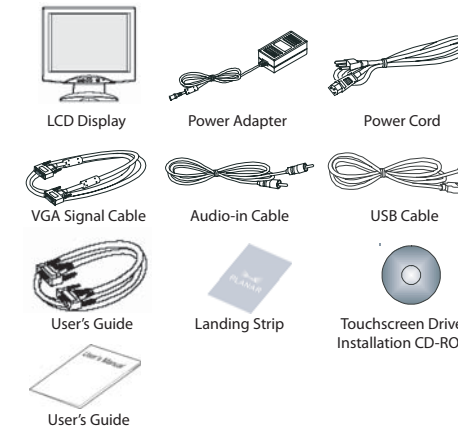
1. Power Cord
2. VGA Cable
3. Audio-In Cable
4. RS-232 Cable
5. USB Cable



**Warning!** Don't plug in both the RS-232 and USB cables! This will cause your touch screen not to work due to driver conflict.

## 3 Package Overview

### Contents -



The test results show that this device meets the FCC rules. Refer to the product operation manual for FCC classification found at: <http://www.planar.com/support>. Those limits are set to protect residential areas from the devices with harmful emission. This device will produce, use and radiate radio frequency energy. In addition, failure to follow the user's manual to install or use this device might produce harmful interference with radio communication. Notwithstanding the foregoing, it does not guarantee that this type of harmful interference does not occur in some special installations. The interference caused by this device to the reception of radio or television signals may be verified by turning it on and off. Any changes or modifications to this TFT LCD would void the user's authority to operate this device.

**Important Recycle Instruction -**  
**Hg** LCD Lamp(s) inside this product contain mercury. This product may contain other electronic waste that can be hazardous if not disposed of properly. Recycle or dispose in accordance with local, state, or federal Laws. For more information, contact the Electronic Industries Alliance at [WWW.EIAE.ORG](http://WWW.EIAE.ORG). For lamp specific disposal information check [WWW.LAMPRECYCLE.ORG](http://WWW.LAMPRECYCLE.ORG).